



RELEASE AND UNWIND

# St. Petersburg

5821 32nd Way South,  
St. Petersburg, FL 33712



## GUEST INFORMATION

Scan this QR code to view  
the Guest Information Packet online



Toll Free: 1-888-LOGGER2

Direct: 727-867-2600 | Fax: 727-867-2622



RELEASE AND UNWIND

## Directions to Loggerhead Club & Marina® – St. Petersburg

### By Water: (VHF Channel # 16)

- Once you are in the Tampa Bay waterway, travel north towards St. Pete, parallel to the Sunshine Skyway Bridge (I-275). Once you reach the mainland, enter Frenchman's Creek (just west of the Bridge) and travel north until you reach the marina.

### By Land:

- From the North: Take I-75 South to exit 274 and take ramp for I-275 South towards St. Petersburg. Exit at exit 16 and follow signs for Skyway Lane / Pinellas Point Drive South. Turn left onto Pinellas Point Drive South, and afterwards your first left onto 31<sup>st</sup> Street South. Destination will be on your left.
- From the South: Take I-75 North towards Tampa. Take exit 228 ramp right for I-275 North towards St. Petersburg. Exit at exit 16 for Skyway Lane / Pinellas Point Drive. Turn left onto Sunshine Skyway Lane South. Turn Right onto Pinellas Point Drive South. Turn Left onto 31<sup>st</sup> Street South. Destination will be on your left.

## Marina Information

### Dock/Rack Layout

- Loggerhead Marina St. Petersburg has a hurricane-rated storage barn with 327 dry storage slips for boats up to 45 feet in length or weighing 30,000lbs. Marina also has 143 wet slips for boats up to 60 feet in length.

### Marine Fuel

- Loggerhead Club & Marina® - St. Petersburg sells ValvTect marine specific 90 octane non ethanol gasoline and ValvTect marine grade diesel, offered exclusively at all Loggerhead Club & Marina locations. Members receive a discount on all fuel purchases.

### On- Site Utilities

- Complimentary pump-out service for our members located at our fuel dock. There is a fee only for non-members.


### Marina Depth

- Depth of the marina basin is 5 to 8 feet.




**RELEASE AND UNWIND**

### In the Event of an After-Hours Emergency

 The marina office phones are forwarded nightly to an answering service. The service will contact the harbormaster or another Loggerhead Club & Marina official in the event of an emergency. If the incident involves an injury or the law is being broken, please dial 911. A call to the marina office will also be appreciated.

### Fixed Bridges

 A fixed bridge is located at our marina entrance with a 21-foot clearance.

### In the Area:

#### Airports

|                                     |                                      |                |
|-------------------------------------|--------------------------------------|----------------|
| Tampa International Airport         | 5507 W Spruce St, Tampa, FL          | (813) 870-8700 |
| St. Petersburg / Clearwater Airport | 14501 Roosevelt Blvd, Clearwater, FL | (727) 453-7800 |

#### Bait & Tackle

|                            |   |                |
|----------------------------|---|----------------|
| Bait Bucket                | 108 Pinellas Bayway S, Tierra Verde, FL | (727) 864-2108 |
| Tatum's Tackle and Grocery | 2445 34th St S, Saint Petersburg, FL    | (727) 321-9353 |

#### Banks

|                 |                                       |                |
|-----------------|---------------------------------------|----------------|
| Bank of America | 2800 54th Ave S, Saint Petersburg, FL | (727) 864-4962 |
|-----------------|---------------------------------------|----------------|

#### Drugstores

|     |                                       |                |
|-----|---------------------------------------|----------------|
| CVS | 3501 54th Ave S, Saint Petersburg, FL | (727) 864-1546 |
|-----|---------------------------------------|----------------|

#### Entertainment

|                      |   |                |
|----------------------|---|----------------|
| Muvico Baywalk       | 151 2nd Ave N, St. Petersburg, FL           | (727) 502-0965 |
| Salvador Dali Museum | 1000 3rd St S, St. Petersburg, FL           | (727) 823-3767 |
| The Pier Aquarium    | 800 2nd Ave NE Ste 2001, St. Petersburg, FL | (727) 895-7437 |

Toll Free: 1-888-LOGGER2

Direct: 727-867-2600 | Fax: 727-867-2622



**RELEASE AND UNWIND**

**Golf and Tennis**

|                               |  |                |
|-------------------------------|--|----------------|
| Renaissance Vinoy Golf Course | 600 Snell Isle Blvd NE, Saint Petersburg, FL | (727) 896-8000 |
| Twin Brooks Golf Course       | 3800 22nd Ave S, Saint Petersburg, FL        | (727) 893-7445 |

**Grocery Stores**

|        |                                       |                |
|--------|---------------------------------------|----------------|
| Publix | 3030 54th Ave S, Saint Petersburg, FL | (727) 864-2030 |
|--------|---------------------------------------|----------------|

**Health Care**

|                                 |   |                |
|---------------------------------|---|----------------|
| Palms-Pasadena Hospital         | 1501 Pasadena Ave S, South Pasadena, FL | (727) 381-1000 |
| Animal Hospital- Pinellas Point | 461 45th Ave S, Saint Petersburg, FL    | (727) 895-8387 |

**Health Clubs**

|            |                                      |                |
|------------|--------------------------------------|----------------|
| Gold's Gym | 4949 34th St S, Saint Petersburg, FL | (727) 864-0333 |
|------------|--------------------------------------|----------------|

**Hotels**

|                            |   |                |
|----------------------------|---|----------------|
| Loews Don CeSar Hotel      | 3400 Gulf Blvd, Saint Pete Beach, FL            | (727) 360-1881 |
| Magnuson Hotel Marina Cove | 6800 Sunshine Skyway Ln S, Saint Petersburg, FL | (727) 867-1151 |

**Liquor Stores**

|                        |                                       |                |
|------------------------|---------------------------------------|----------------|
| Sweetbay Liquor Stores | 1015 62nd Ave S, Saint Petersburg, FL | (727) 865-8235 |
|------------------------|---------------------------------------|----------------|

**Mail & Shipping**

|                |                                       |                |
|----------------|---------------------------------------|----------------|
| US Post Office | 4222 22nd Ave S, Saint Petersburg, FL | (727) 327-8469 |
| UPS Store      | 4905 34th St S, Saint Petersburg, FL  | (727) 867-7234 |



**RELEASE AND UNWIND**

### Marine Services

|                              |                                      |                |
|------------------------------|--------------------------------------|----------------|
| West Marine                  | 5001 34th St S, Saint Petersburg, FL | (727) 867-5700 |
| Progressive Marine Boat Yard | 1351 Bay St SE, Saint Petersburg, FL | (727) 822-2886 |
| M & M Marine Service         | 1017 49th St S, Gulfport, FL         | (727) 321-0186 |
| Yacht Wheels Diver Co        |                                      | (727) 520 6872 |

### Marine Sales

|                              |   |                       |
|------------------------------|---|-----------------------|
| <b>Exclusive Yacht Group</b> | <b>140 Intracoastal Pointe Drive Suite 110,<br/>Jupiter, FL</b> | <b>(561) 745-2780</b> |
| Global Marine                | Located On Site   | (727) 498-6477        |

### Restaurants

|                              |  |                |
|------------------------------|--|----------------|
| West Shore Pizza             | 2824 54 <sup>th</sup> Ave S., St. Petersburg, FL       | (727) 867-4140 |
| Beef O Brady's               | 4775 34 <sup>th</sup> St, S., St. Petersburg, FL 33711 | (727) 866-1086 |
| Moon Under Water             | 332 Beach Dr NE, Saint Petersburg, FL                  | (727) 896-6160 |
| Portofino Italian Restaurant | 5035 34 <sup>th</sup> St. S., St. Petersburg, FL       | (727) 864-2800 |
| Silas Steakhouse Bar & Grill | 5501 Gulf Blvd., St. Pete Beach, FL                    | (727) 360-6961 |
| Spartan Pizza                | 1059 62 <sup>nd</sup> Ave. S., St. Petersburg, FL      | (727) 866-9500 |

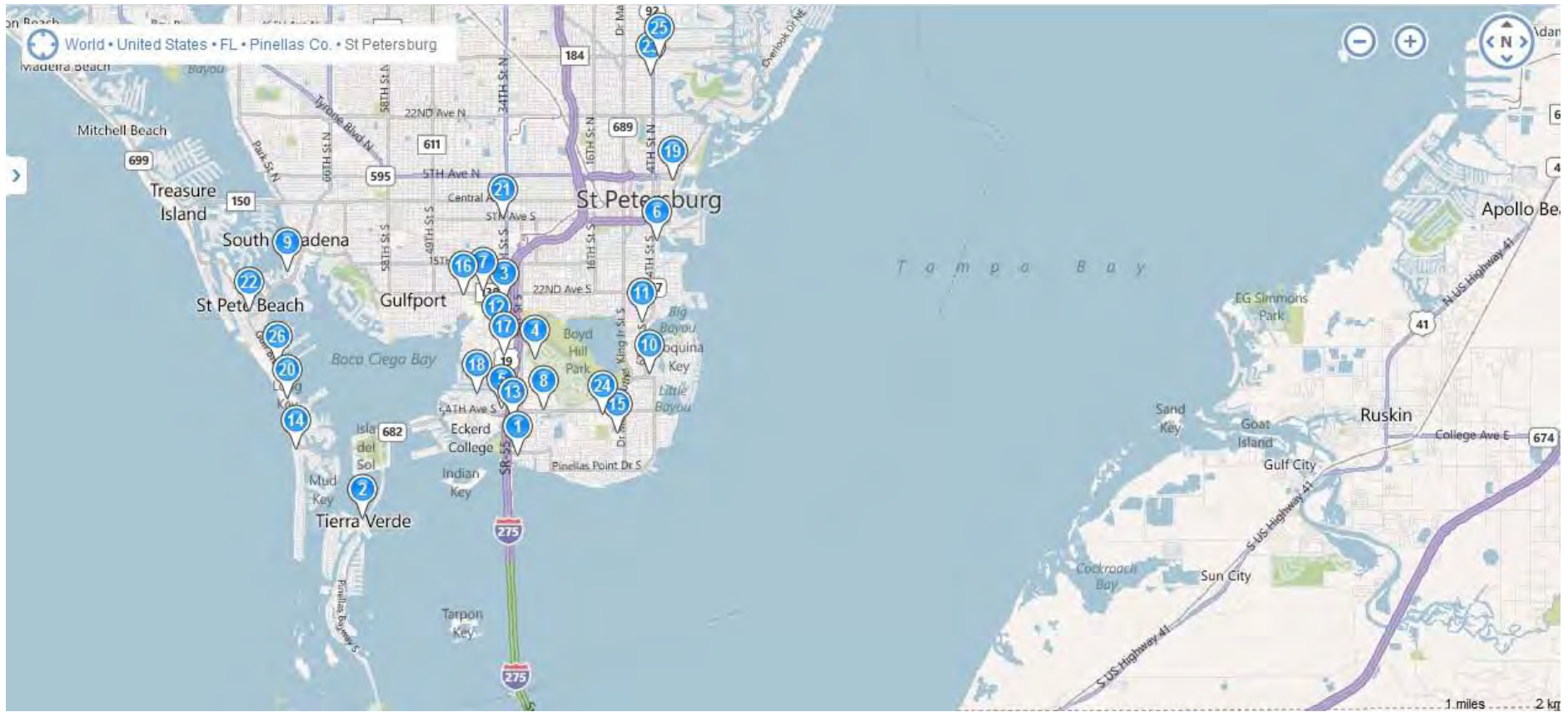
### Transportation Services

|                            |  |                |
|----------------------------|--|----------------|
| Pronto Cab                 |  | (727) 823-3995 |
| BATS Taxi Company          |  | (727) 367-3702 |
| Yellow Cab St. Pete        |  | (727) 328-8685 |
| Hertz Rent a Car           | 4715 Gulf Blvd, Saint Pete Beach, FL           | (727) 360-1631 |
| Enterprise Rent-a-Car      | 3400 5th Ave S, Saint Petersburg, FL           | (727) 323-2144 |
| Beach Cyclist Sports Ctr   | 7517 Blind Pass Rd, Saint Pete Beach, FL 33706 | (727) 367-5001 |
| Beach & Trail Bicycle Shop | 7100 9th Ave N, Saint Petersburg, FL 33710     | (727) 384-6608 |

### US Customs & Immigration

|   |  |                |
|---|--|----------------|
| US Immigration and Customs Enforcement – St. Pete | 14700 Terminal Blvd #120, Clearwater, FL 33762 | (727) 536-7311 |
|---|--|----------------|

## St. Pete Area Map



- 1. Loggerhead Club & Marina**  
5821 32nd Way S, Saint Petersburg, FL
- 2. Bait Bucket**  
108 Pinellas Bayway S, Tierra Verde, FL
- 3. Tatum's Bait Tackle & Grocery**  
2445 34th St S, Saint Petersburg, FL
- 4. Bank of America**  
2800 54th Ave S, Saint Petersburg, FL
- 5. CVS Pharmacy**  
3501 54th Ave S, Saint Petersburg, FL
- 6. Salvador Dali Museum**  
1000 3rd St S, Saint Petersburg, FL
- 7. Twin Brooks Golf Courses**  
3800 22nd Ave S, Saint Petersburg, FL
- 8. Publix Super Market**  
3030 54th Ave S, Saint Petersburg, FL
- 9. Palms-Pasadena Hospital**  
1501 Pasadena Ave S, South Pasadena, FL
- 10. Animal Hospital-Pinellas Pnt**  
461 45th Ave S, Saint Petersburg, FL
- 11. Kindred Hospital-Bay Area**  
3030 6th St S, Saint Petersburg, FL
- 12. Gold's Gym**  
4949 34th St S, Saint Petersburg, FL
- 13. Magnuson Hotel Marina Cove**  
6800 Sunshine Skyway Ln S, Saint Petersburg, FL
- 14. Loews Don CeSar Hotel**  
3400 Gulf Blvd, Saint Pete Beach, FL
- 15. Sweetbay Liquor Stores**  
1015 62nd Ave S, Saint Petersburg, FL
- 16. US Post Office**  
4222 22nd Ave S, Saint Petersburg, FL
- 17. UPS Store**  
4905 34th St S, Saint Petersburg, FL
- 18. West Marine**  
5001 34th St S, Saint Petersburg, FL
- 19. Moon Under Water**  
332 Beach Dr NE, Saint Petersburg, FL
- 20. Hertz Rent A Car**  
4715 Gulf Blvd, Saint Pete Beach, FL
- 21. Enterprise Rent-A-Car**  
3400 5th Ave S, Saint Petersburg, FL
- 22. Beach Cyclist Sports Ctr**  
7517 Blind Pass Rd, Saint Pete Beach, FL
- 23. Westshore Pizza**  
3187 4th St N, Saint Petersburg, FL
- 24. Spartan Restaurant & Pizza**  
1059 62nd Ave S, Saint Petersburg, FL
- 25. Beef O Brady's**  
226 37th Ave N, Saint Petersburg, FL
- 26. Silas Steakhouse & Bayside Bar**  
5501 Gulf Blvd Apt 201, Saint Pete Beach, FL

**RADAR REFLECTORS**

Radar reflectors have been placed on many floating aids to navigation. Individual radar reflector identification on these aids has been omitted from this chart.

**CAUTION**

Temporary changes or defects in aids to navigation are not indicated on this chart. See Local Notice to Mariners.

**DISCLAIMER**

This chart is published and distributed by U.S. Chart Services, Inc. U.S. Chart Services, Inc. has copied, cropped and edited data from OceanGrafix charts to produce this chart. Some of the copied data is copyrighted by OceanGrafix and is used with permission. OceanGrafix makes no claims that the copied data is accurate or suitable for the intended use of the recipient or purchaser and offers no warranty concerning the chart's fitness for use. The data contained in this chart may not be reproduced in any form without written permission from U.S. Chart Services, Inc. and OceanGrafix, U.S. Chart Services, Inc., as well as advertisers and distributors of this product can not be responsible for any errors or omissions which may occur in the printing of this imaged product. All persons using this product are CAUTIONED to use the practices of good seamanship and consult Notice to Mariners when using this information.

**AIDS TO NAVIGATION**

Consult U.S. Coast Guard Light List for supplemental information concerning aids to navigation.

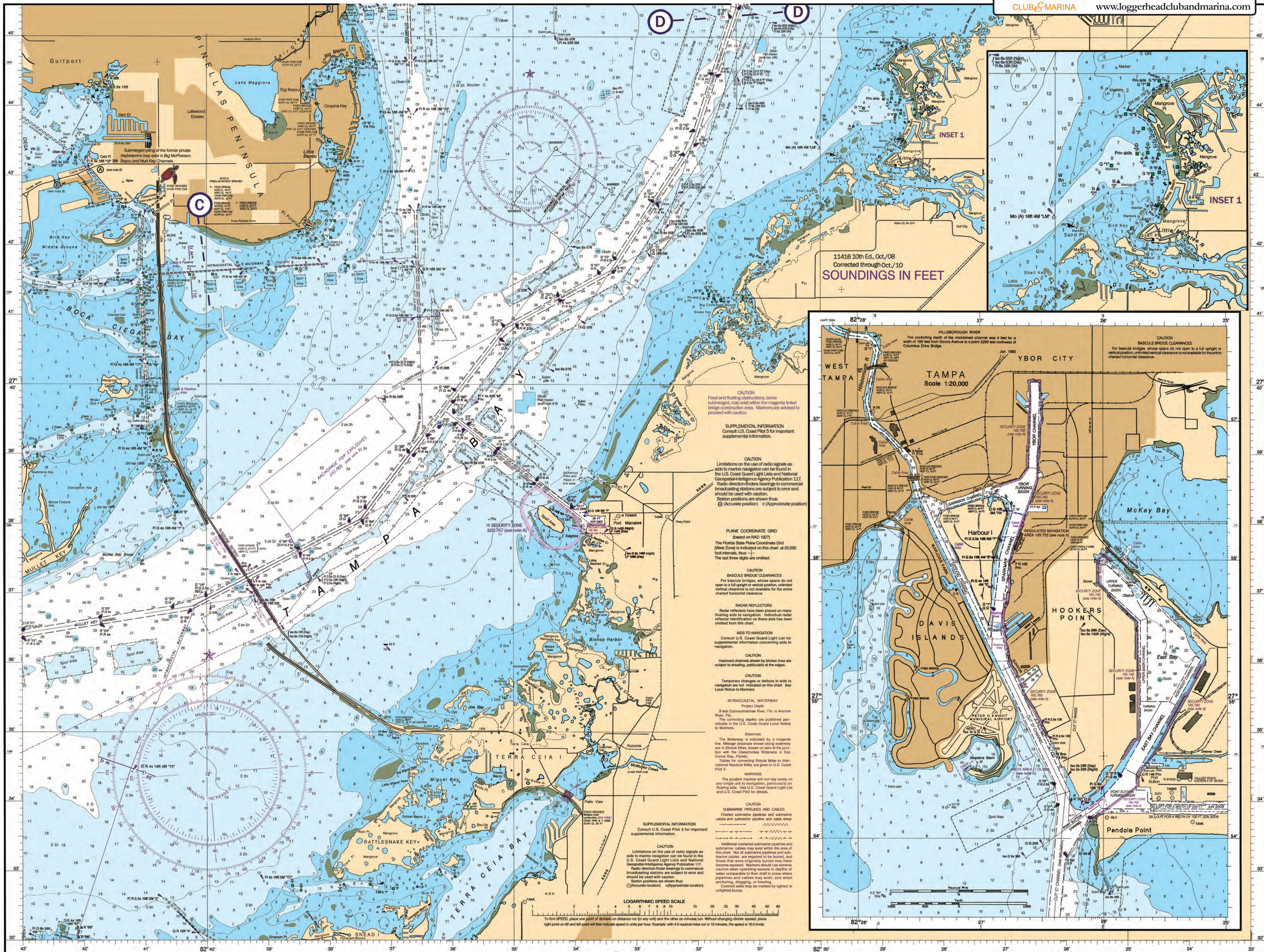


**St. Petersburg, FL**

727-867-2600

Toll Free: 888-LOGGER2

www.loggerheadclubandmarina.com



11416 10th Ed., Oct./08  
Corrected through Oct./10  
**SOUNDINGS IN FEET**

**CAUTION**  
Fixed and floating structures, some submerged, may exist within the magenta tinted bridge construction areas. Mariners are advised to proceed with caution.

**SUPPLEMENTAL INFORMATION**  
Consult U.S. Coast Pilot 5 for important supplemental information.

**CAUTION**  
Limitations on the use of radio signals as aids to marine navigation can be found in the U.S. Coast Guard Light Lists and National Geospatial-Intelligence Agency Publication 117. Radio direction-finder bearings to commercial broadcasting stations are subject to error and should be used with caution. Station positions are shown thus:  
⊙ (Accurate position)   ⊙ (Approximate position)

**PLANE COORDINATE GRID**  
(Based on NAD 1983)  
The Florida State Plane Coordinate Grid (West Zone) is indicated on this chart at 20,000 foot intervals, thus: 11-11.  
The last three digits are omitted.

**CAUTION**  
**BAScule BRIDGE CLEARANCES**  
For bascule bridges, whose spans do not open to a full upright or vertical position, unlimited vertical clearance is not available for the entire charted horizontal clearance.

**RADAR REFLECTORS**  
Radar reflectors have been placed on many floating aids to navigation. Individual radar reflector identification on these aids has been omitted from this chart.

**AIDS TO NAVIGATION**  
Consult U.S. Coast Guard Light List for supplemental information concerning aids to navigation.

**CAUTION**  
Improved channels shown by broken lines are subject to shoaling, particularly at the edges.

**CAUTION**  
Temporary changes or defects in aids to navigation are not indicated on this chart. See Local Notice to Mariners.

**INTRACOASTAL WATERWAY**  
Project Depth  
9 feet Galveston-Houston River, Fla. to Anclote River, Fla.  
The controlling depths are published periodically in the U.S. Coast Guard Local Notice to Mariners.

**Distances**  
The Waterway is indicated by a magenta line. Magenta distances shown along waterways are in Statute Miles, based on zero at the junction with the Chesapeake Waterway at San Carlos Bay, Florida.

**Distances**  
Tables for converting Statute Miles to International Nautical Miles are given in U.S. Coast Pilot 5.

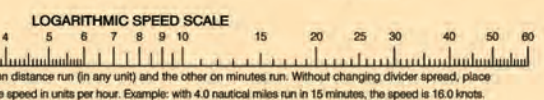
**WARNING**  
The prudent mariner will not rely solely on any single aid to navigation, particularly on floating aids. See U.S. Coast Guard Light List and U.S. Coast Pilot for details.

**CAUTION**  
**SEMI-MARINE PIPELINES AND CABLES**  
Charted submarine pipelines and submarine cables and submarine pipeline and cable areas are shown as follows:

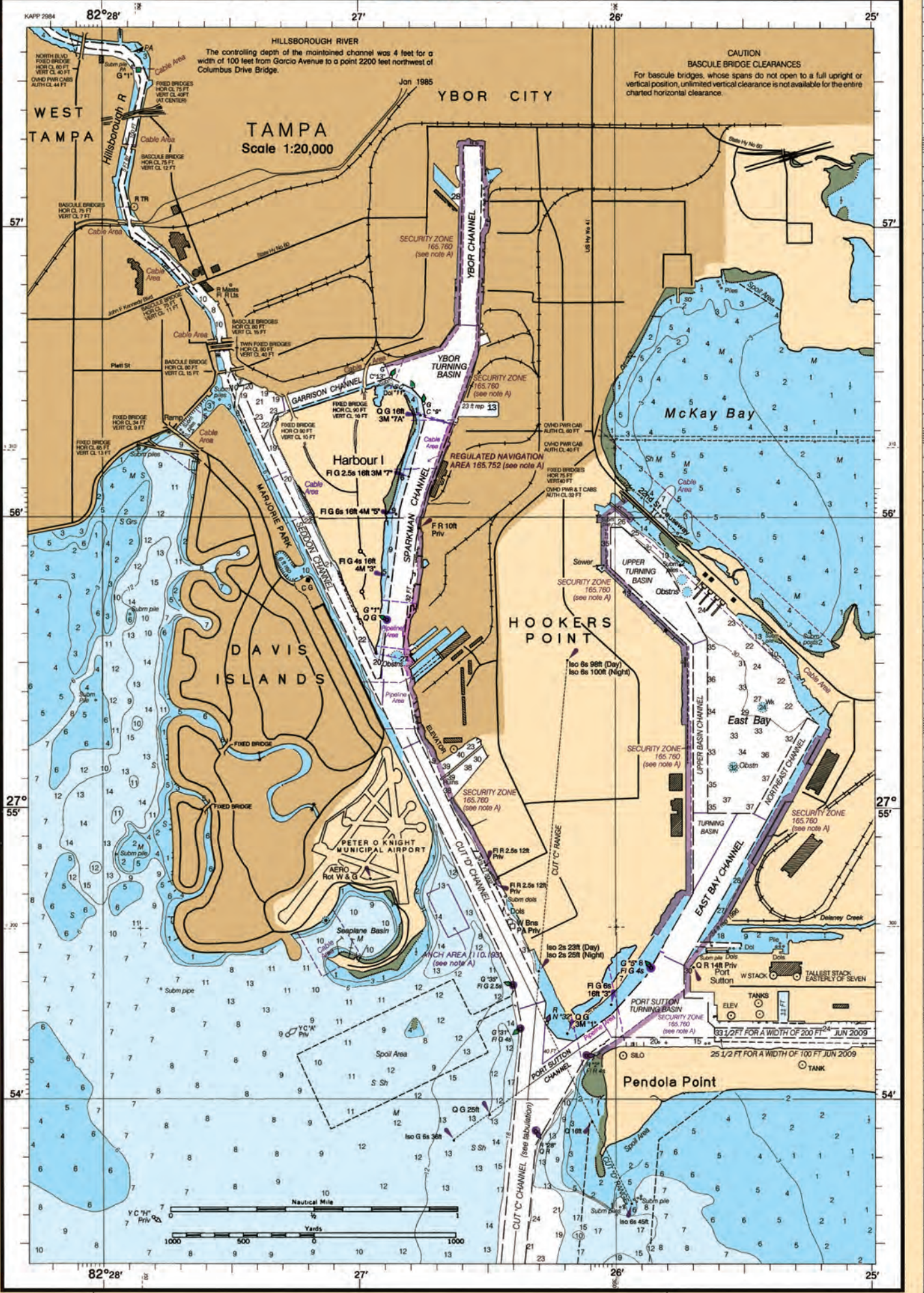
**CAUTION**  
Additional uncharted submarine pipelines and submarine cables may exist within the area of this chart. Not all submarine pipelines and submarine cables are required to be buried, and those that were originally buried may have become exposed. Mariners should use extreme caution when operating vessels in depths of water comparable to their draft in areas where pipelines and cables may exist, and when anchoring, dragging, or trawling. Covered ways may be marked by lighted or unlighted buoys.

**SUPPLEMENTAL INFORMATION**  
Consult U.S. Coast Pilot 5 for important supplemental information.

**CAUTION**  
Limitations on the use of radio signals as aids to marine navigation can be found in the U.S. Coast Guard Light Lists and National Geospatial-Intelligence Agency Publication 117. Radio direction-finder bearings to commercial broadcasting stations are subject to error and should be used with caution. Station positions are shown thus:  
⊙ (Accurate position)   ⊙ (Approximate position)



To find SPEED, place one point of dividers on distance run (in any unit) and the other on minutes run. Without changing divider spread, place right point on 60 and left point will then indicate speed in units per hour. Example: with 4.0 nautical miles run in 15 minutes, the speed is 16.0 knots.



WEST TAMPA TAMPA Scale 1:20,000 YBOR CITY

McKay Bay HOOKERS POINT DAVIS ISLANDS

Pendola Point

82°28' 27' 26' 25'

27° 57' 56' 55' 54'

82°28' 27' 26' 25'

27° 55' 54'

82°28' 27' 26' 25'

27° 53' 52' 51' 50'

82°28' 27' 26' 25'

27° 51' 50' 49' 48'

82°28' 27' 26' 25'

27° 49' 48' 47' 46'

82°28' 27' 26' 25'

27° 47' 46' 45' 44'

82°28' 27' 26' 25'

27° 45' 44' 43' 42'

82°28' 27' 26' 25'

27° 43' 42' 41' 40'

82°28' 27' 26' 25'

27° 41' 40' 39' 38'

82°28' 27' 26' 25'

27° 39' 38' 37' 36'

82°28' 27' 26' 25'

27° 37' 36' 35' 34'

82°28' 27' 26' 25'

27° 35' 34' 33' 32'

82°28' 27' 26' 25'

27° 33' 32' 31' 30'

82°28' 27' 26' 25'

27° 31' 30' 29' 28'